

687 DERAILLEUR HANGER INSTRUCTIONS

At Salsa, we believe that a sense of adventure makes life better. The bicycle can be so much more than just a bike; it's a path to new places, new people, and amazing experiences.

Thank you for your purchase. We hope it makes a good riding experience even better!

Salsa. Adventure by bike.

▲ WARNING: CYCLING CAN BE DANGEROUS. BICYCLE PRODUCTS SHOULD BE INSTALLED AND SERVICED BY A PROFESSIONAL MECHANIC. NEVER MODIFY YOUR BICYCLE OR ACCESSORIES. READ AND FOLLOW ALL PRODUCT INSTRUCTIONS AND WARNINGS INCLUDING INFORMATION ON THE MANUFACTURER'S WEBSITE. INSPECT YOUR BICYCLE BEFORE EVERY RIDE. ALWAYS WEAR A HELMET.

Compatibility and Intended Use

This derailleur hanger is compatible with all frames using the 687 dropout.

Tools:

Grease

3mm hex wrench

Torque wrench that measures in Nm

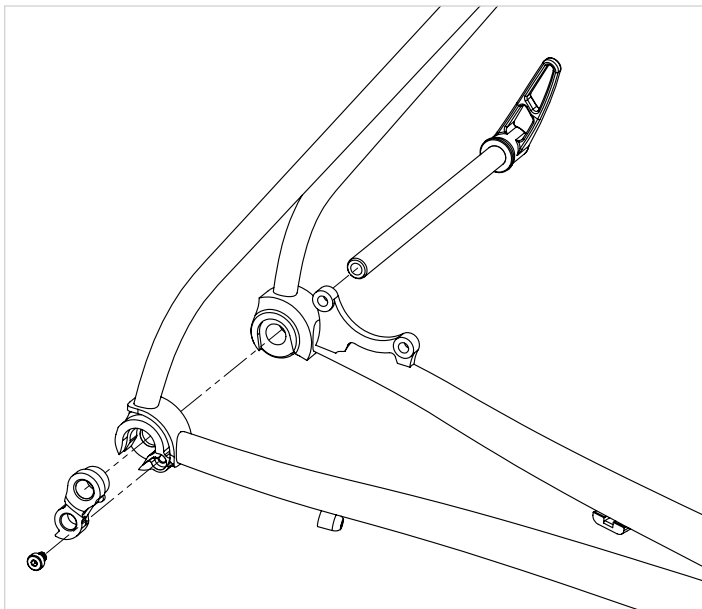


Image representative of dropout interface, may not represent rider's specific bicycle frame.

Installation

1. Remove rear thru-axle per axle manufacturer's instructions.
2. Remove rear wheel.
3. Remove rear derailleur.
4. Remove replaceable hanger mounting bolt.
5. Remove replaceable hanger using a 3mm hex wrench.
6. Inspect area for cracks and damage. If damage is found, consult your Salsa dealer.
7. Insure frame and hanger are free of debris.
8. Place hanger in frame's dropout recess.
9. Apply grease to the 3mm derailleur hanger bolt threads, and thread it in just far enough to hold the hanger in place.
10. Install rear derailleur per manufacturer's instructions.
11. Install rear wheel.
12. Install thru axle. Tighten to manufacturer specification.
13. With the wheel properly aligned and installed in the frame, tighten the derailleur hanger bolt to a maximum of 3Nm.
14. Install rear derailleur per manufacturer's instructions.
15. Make derailleur adjustments per the derailleur manufacturer's instructions.

Ongoing Maintenance

Periodically check to make sure the mounting bolt is properly tightened to the frame and free of any cracks or damage.

Warranty Information:

Proof of purchase is required before a warranty claim is processed. Salsa Cycles therefore strongly encourages warranty registration at salsacycles.com. Failure to register will not affect consumer rights under the limited warranty stated above, so long as the consumer can show in a reasonable manner proof of original ownership and the date the Salsa Cycles product was purchased.

If you have any questions contact warranty@salsacycles.com