

## FENDER PREPARATION INSTRUCTIONS FOR FRAMES WITH HIDDEN FENDER MOUNTS

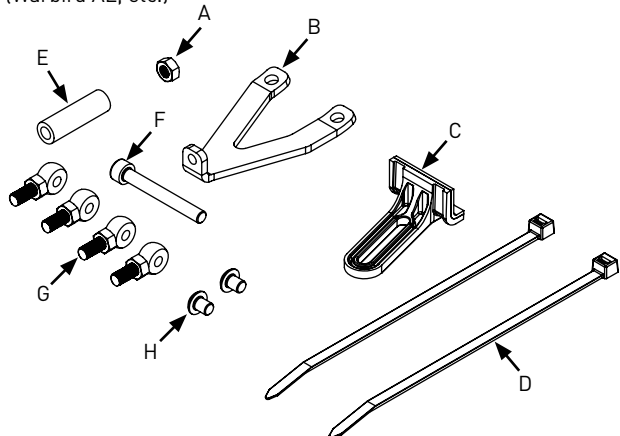
At Salsa, we believe that a sense of adventure makes life better. The bicycle can be so much more than just a bike; it's a path to new places, new people, and amazing experiences.

Thank you for your purchase. We hope it makes a good riding experience even better!

Salsa. Adventure by bike®.

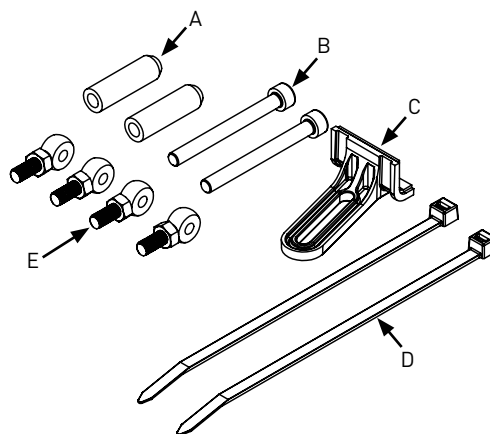
**▲ WARNING:** CYCLING CAN BE DANGEROUS. BICYCLE PRODUCTS SHOULD BE INSTALLED AND SERVICED BY A PROFESSIONAL MECHANIC. NEVER MODIFY YOUR BICYCLE OR ACCESSORIES. READ AND FOLLOW ALL PRODUCT INSTRUCTIONS AND WARNINGS INCLUDING INFORMATION ON THE MANUFACTURER'S WEBSITE. INSPECT YOUR BICYCLE BEFORE EVERY RIDE. ALWAYS WEAR A HELMET.

### FENDER KIT FOR ALLOY FRAMES (Warbird AL, etc.)



- A M5 x 0.8mm Nut
- B BB Fender Mount
- C Seatstay Fender Bracket
- D 150L Standard Cable Tie
- E 5.2 x 9 x 30 L Spacer
- F M5 x 0.8 - 40L Socket Head Cap Screw
- G Fender Mount Assembly
- H M5 x 0.8 - 6L Button Head Cap Screw

### FENDER KIT FOR COMPOSITE FRAMES (Warbird Carbon, etc.)



- A 5.2 x 9 x 30 L Spacer
- B M5 x 0.8 - 50L Socket Head Cap Screw
- C Seatstay Fender Mount
- D 150L Standard Cable Tie
- E Fender Mount Assembly

### Intended Use

These instructions have been written to prepare your frame for fender installation. Salsa's Fender Mounts provide a non-permanent fender mounting solution for wet-weather riding.



### Condition 2

Intended for ASTM 2 conditions, defined as unpaved and gravel roads and trails with moderate grades. In this set of conditions, contact with irregular terrain and loss of tire contact with the ground may occur. Drops are intended to be limited to 15cm (6") or less.

### Compatibility

**NOTE:** Please see separate fork instructions for fender mounting onto the fork.

**NOTE:** Salsa recommends QR fenders only!

The Fender Mount Assembly (items G, E) is used on several frame and fork models (Warbird Carbon, Colossal, etc.).

Frames without a typical seatstay bridge use the Seatstay Fender Bracket (item C).

Composite frames, such as the Warbird Carbon, use the 30mm spacer and 40mm bolt to mount the fender to the bottom bracket.

Alloy frames, such as the Warbird AL, use the wishbone bracket that attaches with two M5 bolts under the bottom bracket shell.

Typical frames with seatstay and chainstay bridges (i.e. Vaya Steel or Colossal Steel) do not require special frame preparation to mount fenders. Once the consumer has followed the instructions for fender mount assembly at the dropout they should proceed with the fender manufacturer's instructions.

# FENDER PREPARATION INSTRUCTIONS FOR FRAMES WITH HIDDEN FENDER MOUNTS

## Tools

- 8mm box end wrench
- Specific allen keys for fender hardware
- Torque wrench that measures in Nm
- Blue threadlocker

## Installation Instructions

### SEATSTAY BRIDGE

For frames that do not have typical seatstay bridges, follow the instructions below.

EXAMPLE: WARBIIRD CARBON & WARBIIRD ALUMINUM (fig. 1)

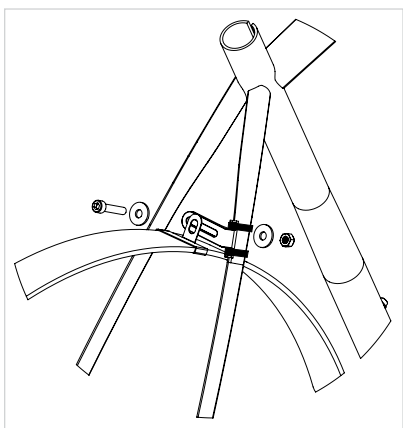


Figure 1

1. Loosely attach the seatstay bridge attachment to the inside of the driveside seatstay with zip ties positioned so that the angle of the attachment bridge is parallel to the ground. **DO NOT FULLY TIGHTEN THE ZIP TIES** until the final positioning of the fender has been determined.
2. Assemble fender following manufacturer instructions to seatstay bridge.
3. Once fender has been properly positioned, fully tighten zip ties so fender mount cannot move.
4. Tighten hardware to fender manufacturer's instructions but do not exceed 5Nm.

### CHAINSTAY BRIDGE

For frames that do not have typical chainstay bridges, follow the instructions below.

EXAMPLE: WARBIIRD CARBON (fig. 2)

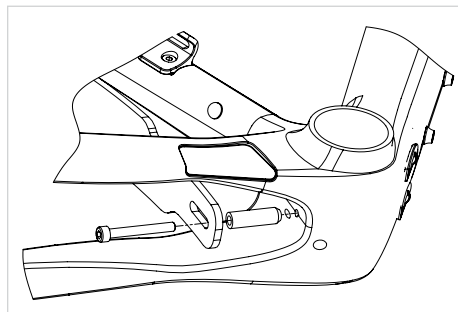


Figure 2

1. Apply blue threadlocker into the threaded fender mount bracket hole between the chainstays and behind the bottom bracket shell.
2. Place the 30mm spacer between the fender and the bottom bracket shell, and thread the 40mm bolt through the fender and spacer to attach the fender to the frame. Tighten per the fender manufacturer's instructions but do not exceed 5Nm.

EXAMPLE: WARBIIRD ALUMINUM (fig. 3)

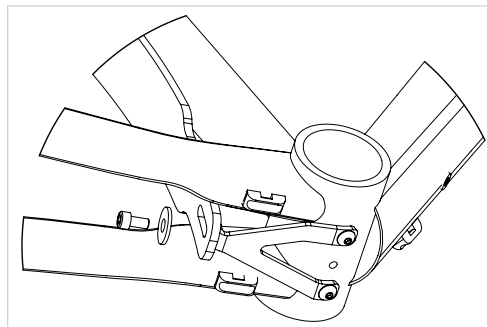


Figure 3

1. Apply blue threadlocker into the threaded fender mount bracket holes under the bottom bracket shell.
2. Thread M5 bolts through the bottom bracket wishbone fender mount bracket, and place it on the bottom bracket shell with the "L" eyelet pointing upwards and towards the rear of the frame.
3. Tighten the bolts to 3-4Nm to lock wishbone fender mount bracket into position.
4. Follow fender manufacturer instructions for installing fender onto fender bracket and torque rating. Do not exceed 5Nm. Use the additional M5 nut if needed.

## FENDER PREPARATION INSTRUCTIONS FOR FRAMES WITH HIDDEN FENDER MOUNTS

### REAR DROPOUTS

There are no special requirements to mount a rear fender to the rear dropouts of the Vaya.

EXAMPLE: WARBIRD & COLOSSAL (fig. 4)

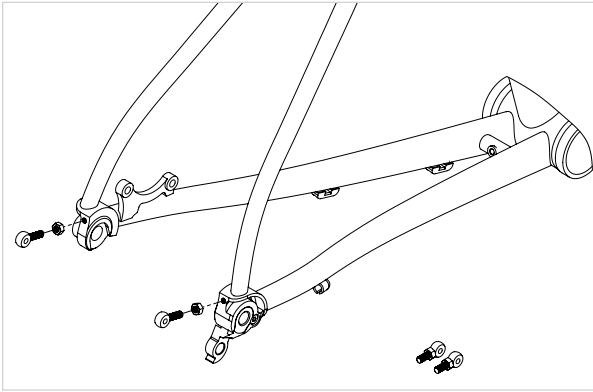


Figure 4

1. Remove set screws from fender mounting holes.
2. Apply Blue threadlocker onto fender mount.
3. Thread M5 nuts onto fender mounts
4. Make sure the nuts are threaded onto the fender mounts at least 6-7 threads.
5. Thread fender mounts into rear dropout fender-mounting holes.
6. Make sure fender mounts are threaded in at least 4 threads.
7. Thread nut up to the dropout.
8. Make sure fender mount face is parallel with plane of the frame.
9. Tighten nut to 3-4Nm to lock fender mount into position.
10. Check that assembly is tightened properly.
11. Install fenders per fender manufacturer's specifications but do not exceed 5Nm. (**NOTE:** Salsa recommends QR fenders only!)

### Ongoing Maintenance

Periodically check to make sure all mounting bolts are properly tightened to the frame and fork, and that the fenders are properly installed per the fender manufacturer's specifications.

**⚠ WARNING:** Do not mount racks or any other load bearing accessory to the fender mounts. Doing so could result in fork breakage, causing a loss of control. If you are not sure if a device is compatible, consult your dealer.

### Warranty Information:

Proof of purchase is required before a warranty claim is processed. Salsa Cycles therefore strongly encourages warranty registration at [salsacycles.com](http://salsacycles.com). Failure to register will not affect consumer rights, so long as the consumer can show in a reasonable manner proof of original ownership and the date the Salsa Cycles product was purchased.

If you have any questions contact [warranty@salsacycles.com](mailto:warranty@salsacycles.com) or visit [www.salsacycles.com/support](http://www.salsacycles.com/support) for more warranty information.

### SALSA CYCLES

6400 West 105th Street, Bloomington, MN 55438

Tel: 877-MOTO-ACE Fax: 952-983-6210

[www.salsacycles.com](http://www.salsacycles.com)