

FENDER PREPARATION INSTRUCTIONS FOR FORKS WITH HIDDEN FENDER MOUNTS

At Salsa, we believe that a sense of adventure makes life better. The bicycle can be so much more than just a bike; it's a path to new places, new people, and amazing experiences.

Thank you for your purchase. We hope it makes a good riding experience even better!

Salsa. Adventure by bike®.

⚠ WARNING: CYCLING CAN BE DANGEROUS. BICYCLE PRODUCTS SHOULD BE INSTALLED AND SERVICED BY A PROFESSIONAL MECHANIC. NEVER MODIFY YOUR BICYCLE OR ACCESSORIES. READ AND FOLLOW ALL PRODUCT INSTRUCTIONS AND WARNINGS INCLUDING INFORMATION ON THE MANUFACTURER'S WEBSITE. INSPECT YOUR BICYCLE BEFORE EVERY RIDE. ALWAYS WEAR A HELMET.

Intended Use

These instructions have been written to prepare your fork for fender installation. Salsa's Fender Mounts provide a non-permanent fender mounting solution for wet weather riding.



Condition 2

Intended for ASTM 2 conditions, defined as unpaved and gravel roads and trails with moderate grades. In this set of conditions, contact with irregular terrain and loss of tire contact with the ground may occur. Drops are intended to be limited to 15cm (6") or less.

Compatibility

This fender mounting system is compatible with forks with hidden fender mounts.

Tools

- 8mm box end wrench
- Allen key size for set screws
- Allen key size for fender screws
- Torque wrench that measures in Nm
- Blue threadlocker

Installation Instructions

NOTE: 2016 to current Vaya Carbon forks: these forks have standard dropout eyelet mounts for fenders or mid-blade boss front racks. Follow standard fender installation for the dropout eyelets per the fender manufacturer instructions, and the below instructions for the fender crown mount.

1. Remove set screws from fender mounting holes (fig. 1).

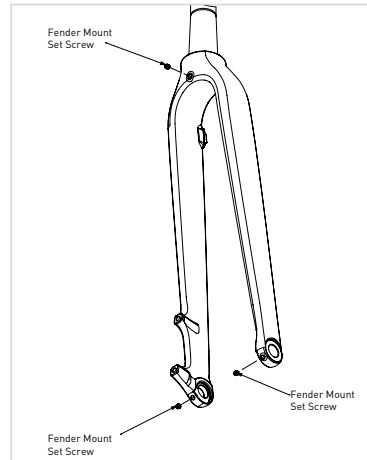


Figure 1

2. Apply Blue threadlocker onto fender mount.
3. Thread M5 nuts onto fender mounts (fig. 2).

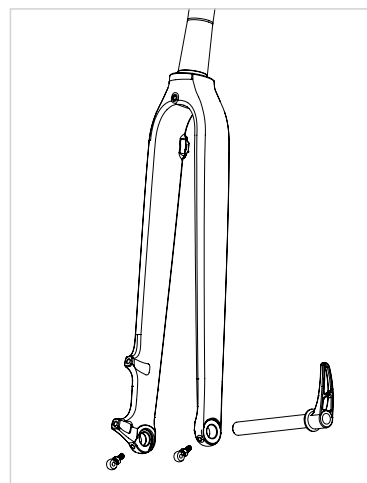


Figure 2

4. Make sure the nuts are threaded onto the fender mounts at least 6-7 threads.
5. Thread fender mounts into fork leg fender-mounting holes.
6. Make sure fender mounts are threaded in at least 4 threads.
7. Thread nut up to the fork leg.
8. Make sure fender mount face is parallel with plane of the fork.
9. Tighten nut to 3-4Nm to lock fender mount into position.
10. Check that assembly is tightened properly.

FENDER PREPRATION INSTRUCTIONS FOR FORKS WITH HIDDEN FENDER MOUNTS

11. When installing fender into mounts and threaded crown hole, install per fender manufacturer instructions and a maximum of 5Nm with fender hardware.
12. Install fenders per fender manufacturer specifications. Use supplied 30mm spacer and 40mm screw on disc brake side if needed for clearance (fig. 3). **(NOTE: Salsa recommends QR fenders only!)**

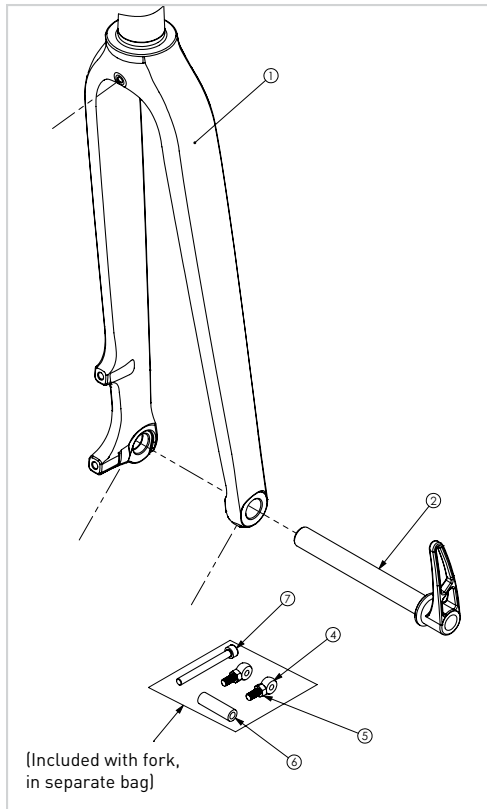


Figure 3

12. An M5 screw will need to be used to mount fender crown hardware to fork. Follow fender manufacturer instructions and torque rating but do not exceed 5Nm with 40mm screw.

Ongoing Maintenance

Periodically check to make sure all mounting bolts are properly tightened to the frame and fork, and that the fenders are properly installed per the fender manufacturer's specifications.

⚠ WARNING: Do not mount racks or any other load bearing accessory to the fender mounts. Doing so could result in fork breakage, causing a loss of control. If you are not sure if a device is compatible, consult your dealer.

Warranty Information:

Proof of purchase is required before a warranty claim is processed. Salsa Cycles therefore strongly encourages warranty registration at salsacycles.com. Failure to register will not affect consumer rights, so long as the consumer can show in a reasonable manner proof of original ownership and the date the Salsa Cycles product was purchased.

If you have any questions contact warranty@salsacycles.com or visit www.salsacycles.com/support for more warranty information.

SALSA CYCLES

6400 West 105th Street, Bloomington, MN 55438

Tel: 877-MOTO-ACE Fax: 952-983-6210

www.salsacycles.com