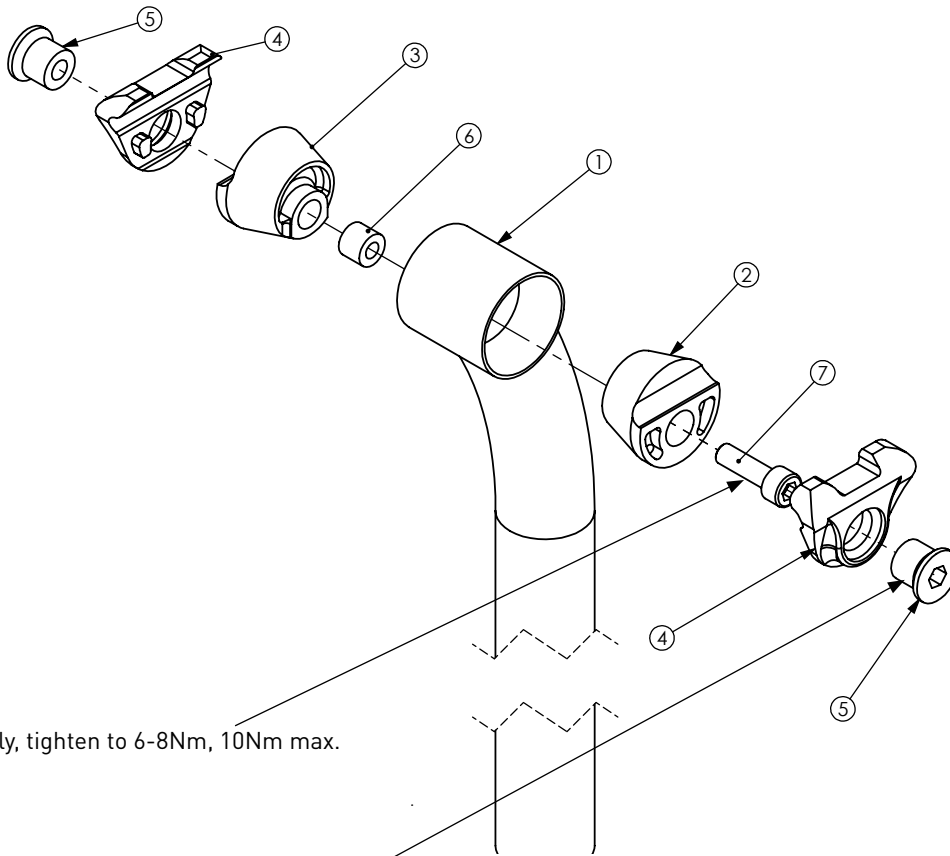




REGULATOR Ti SEATPOST INSTRUCTIONS



Note: For assembly, tighten to 6-8Nm, 10Nm max.

Note: Apply grease to threads and under bolt head.
For assembly, tighten to 3-5Nm.

Item #	Description	Quantity
1	Regulator Ti Seatpost	1
2	Saddle Rail Rest, Thru-Hole	1
3	Saddle Rail Rest, Threaded	1
4	Saddle Clamp	2
5	Saddle Bolt	2
6	Keylocking Threaded Insert	1
7	M6 Bolt	1

SALSA CYCLES

6400 West 105th Street, Bloomington, MN 55438

Tel: 877-668-6223 Fax: 952-983-6210

www.salsacycles.com

At Salsa, we believe that a sense of adventure makes life better. The bicycle can be so much more than just a bike; it's a path to new places, new people, and amazing experiences.

Thank you for your purchase. We hope it makes a good riding experience even better!

Salsa. Adventure by bike.®

▲ WARNING: Cycling can be dangerous. Bicycle products should be installed and serviced by a professional mechanic. Never modify your bicycle or accessories. Read and follow all product instructions and warnings including information on the manufacturer's website. Inspect your bicycle before every ride. Always wear a helmet.

Tools

5mm and 6mm hex wrenches, torque wrench

Intended Use

Reference ASTM Use Condition Chart.

Compatibility

The Regulator Ti seatpost is only compatible with 7mm round metal seat rails. Not for use with carbon seat rails or ovalized seat rails.

Additional Product and Safety Information can be found at salsacycles.com/safety.

SEATPOST DIAMETER IS CRITICAL: Confirm seatpost and frame compatibility. If the seat tube diameter is not printed at the base of the current seatpost, measure the post diameter or seat tube diameter with a pair of calipers.

▲ WARNING: Seatpost diameter is critical and must precisely match the diameter of the frame's seat tube. Using the incorrect size seatpost could damage the seatpost or your bicycle frame. If you are not sure of the right size, consult your local bike shop.

▲ WARNING: Improper installation of bolts or hardware may lead to product failure, causing serious injury. Do not exceed specified torque values.

Assembly Instructions

1. Insert the saddle rail rests into seatpost (Fig. 1).
2. Insert M6 bolt into the non-threaded saddle rail rest and thread into the opposing tapered saddle rail rest. Only tighten to hold assembly in-place, so that saddle rail rests can still rotate slightly.
3. Place saddle onto the seatpost, placing the saddle rails onto the saddle rail rest pieces (Fig. 2).
4. Apply grease to threads and under bolt head. Mount saddle rail clamps and thread in saddle bolts but not so tightly that the rails can't move (Fig. 3).
5. Place saddle in proper fore/aft position.
6. Once proper saddle position is achieved tighten saddle bolts to 3–5Nm with M6 hex tool (Fig. 4).
7. Make sure there is no movement and that saddle cannot slide in clamps.
8. Set the proper angle of the saddle.
9. Tighten the M6 bolt to 6–8Nm, and a maximum of 10Nm with M5 hex tool (Fig. 5).
10. Make sure the saddle cannot move fore/aft or rotationally.
11. Test for slippage before every ride.

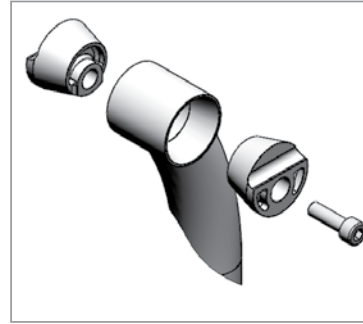


Figure 1



Figure 2



Figure 3



Figure 4



Figure 5

▲ WARNING: Overtightening the saddle clamp bolts can damage the seatpost resulting in product failure and serious injury.

▲ WARNING: Improper installation of the saddle clamp bolts or hardware may lead to product failure, causing serious injury. Do not exceed specified torque values.

Seatpost Installation

1. Clean the inside of the seat tube and remove any burrs with file or fine grit sandpaper. Lightly grease the inside of seat tube (Fig. 6).

NOTE: Use carbon assembly paste instead of grease for carbon seatposts or when installing a metal seatpost in a carbon frame.

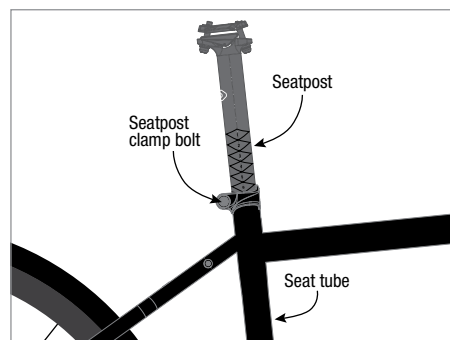


Figure 6

- Slide the seatpost into seat tube at least until the MINIMUM INSERTION marking on the seatpost is no longer visible (Fig. 7). Then tighten the seatpost clamp bolt until it is snug. DO NOT SIT ON THE BIKE AT THIS POINT AS THE SEATPOST CAN SLIDE INTO THE FRAME AND CAUSE DAMAGE.

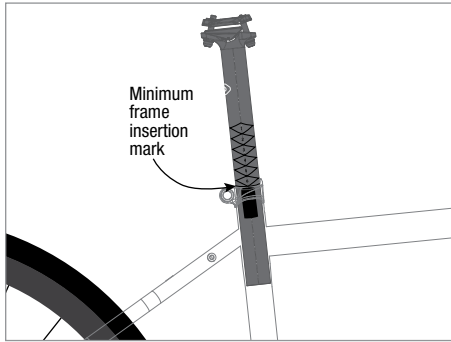


Figure 7

- ⚠ **WARNING:** Do not tighten seatpost bolt or ride the bicycle if clamp pieces and bolt are misaligned.
- ⚠ **WARNING:** Overtightening the seatpost clamp can damage both the seatpost and the frame resulting in failure, a loss of control, and serious injury.
- ⚠ **WARNING:** Never scratch a height mark into a carbon seatpost. Doing so can cause it to break. Instead wrap a piece of electrical tape around the seatpost to mark the desired height or paint a line on it.

Seatpost Adjustment

To Adjust Fore/Aft Position

- Loosen saddle bolts.
- Once saddle bolts are loose enough, adjust saddle fore or aft.
- Check that threads and contact surfaces of saddle bolts are properly greased.
- Once desired position is achieved, retighten saddle bolts to 3–5Nm.
- Test for slippage before riding.

To Adjust Saddle Angle

- Loosen M6 bolt. First you will feel bolt loosen and then you will feel resistance. This is OK; this bolt and assembly act as a self-extracting mechanism. Continue a couple of turns, then push downward on the saddle slightly as you loosen the bolt. Soon the saddle rail rests will loosen from the seatpost and the saddle will pop loose and freely rotate.
- Adjust the saddle for desired angle and then tighten the M6 bolt to 6–8Nm, 10Nm max.
- Test for slippage before riding.

⚠ **WARNING**

Do not modify the Regulator Ti Seatpost. Doing so will void the warranty (see Warranty section).

Ongoing Seatpost Maintenance

- ⚠ **WARNING:** Improper installation of bolts may lead to product failure, causing serious injury. Do not exceed specified torque values. Periodically inspect bolts and tighten if required.
- ⚠ **WARNING:** Inspect your seatpost before every ride. Never ride a creaking, bent, broken, or loose saddle or seatpost. Do not overtighten the saddle clamp bolts as this may damage the seatpost resulting in product failure or serious injury while riding. If any of these issues occur, stop riding the bicycle and take it to a bicycle mechanic for inspection.
- Periodically inspect saddle clamp and seatpost clamp bolt(s) and retighten if required
- Clean with light soap and water. Dry with a rag

Warranty

Salsa Cycles warrants this new Salsa product against defects in materials and workmanship for two (2) years from the original date of retail purchase by the consumer. This limited warranty is expressly limited to the repair or replacement of the original product, at the option of Salsa Cycles, and is the sole remedy of the warranty. This limited warranty applies only to the original purchaser of the Salsa product and is not transferable. In no event shall Salsa Cycles be liable for any loss, inconvenience or damage, whether direct, incidental or consequential or otherwise resulting from breach of any express or implied warranty or condition, of merchantability, fitness for a particular purpose, or otherwise with respect to this product except as set forth herein.

This warranty does not cover the following:

- Damage due to improper assembly or follow-up maintenance or lack of skill, competence or experience of the end user
- Products that have been modified, neglected, used in competition or for commercial purposes, misused or abused, involved in accidents or anything other than normal use
- Damage or deterioration to the surface finish, aesthetics or appearance of the product
- Normal wear and tear
- Labor required to remove and/or refit and re-adjust the product within the bicycle assembly

To the extent not prohibited by law, these warranties are exclusive and there are no other express or implied warranties or conditions including warranties or conditions of merchantability and fitness for a particular purpose.

Proof of purchase is required before a warranty claim is processed. Salsa Cycles therefore strongly encourages warranty registration at salsacycles.com. Failure to register will not affect consumer rights under the limited warranty stated above, so long as the consumer can show in a reasonable manner proof of original ownership and the date the Salsa Cycles product was purchased.

If you have any questions contact warranty@salsacycles.com.

SALSA CYCLES

6400 West 105th Street, Bloomington, MN 55438

Tel: 877-668-6223 Fax: 952-983-6210

www.salsacycles.com