

# ALTERNATOR RACK INSTALLATION INSTRUCTIONS

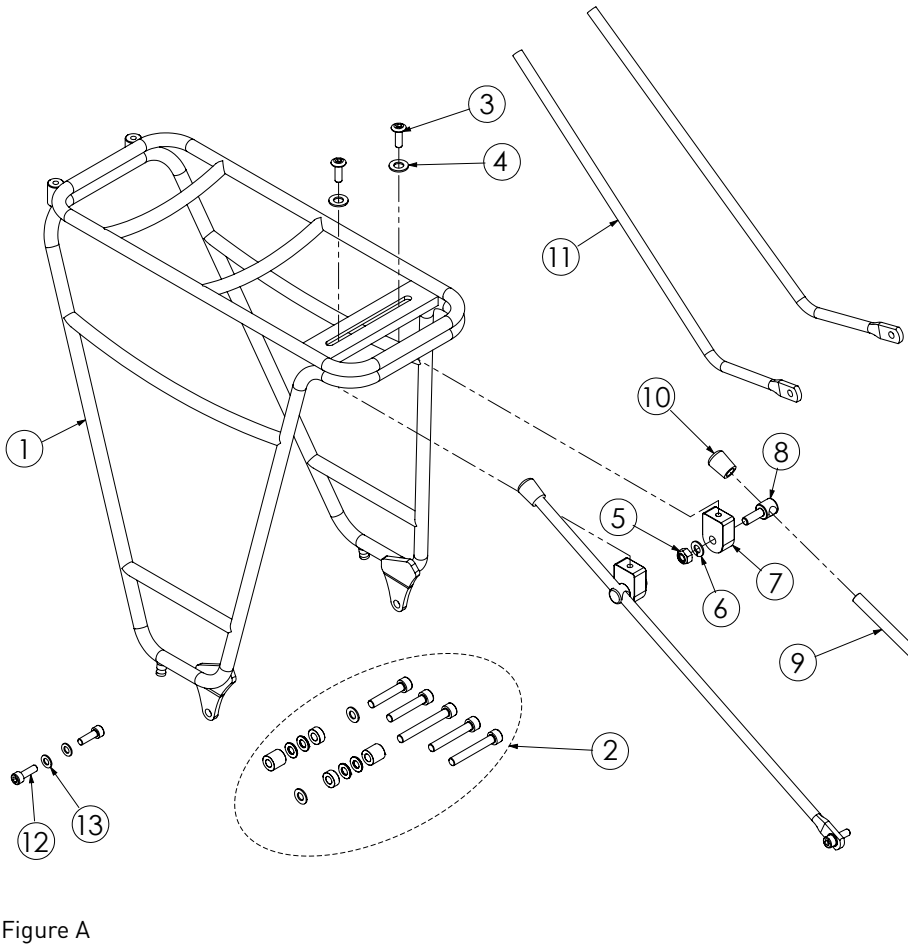
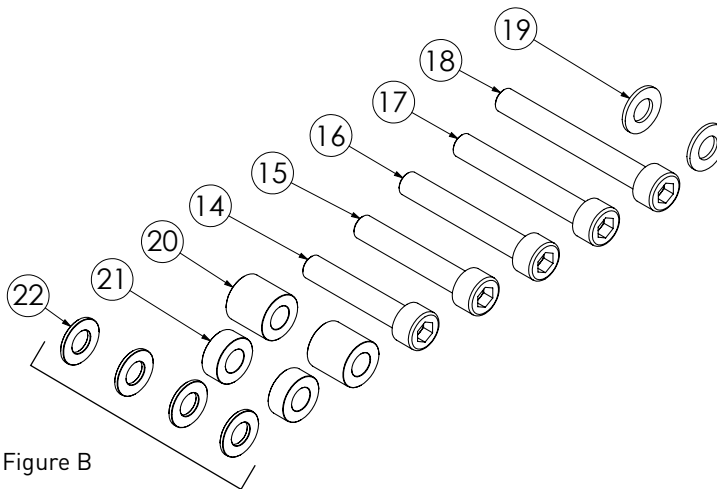


Figure A

Item #	Description	Quantity
1	Alternator Rack	1
2	Lower Mount Kit (see detail)	
3	16mm M5 Swivel-Mount Bolt	2
4	M7 Washer	2
5	M6 Lock Nut	2
6	Lock Washer	2
7	Swivel Mount	2
8	Swivel Bolt	2
9	Ø8mm Rack Strut	2
10	Strut End-Cap	2
11	Ø8mm Bent Rack Strut	2
12	16mm M5 Bolt	4
13	M5 Washer	4

Figure A



Lower Mount Kit (detail for item 2 in Fig. A)

Figure B

Item #	Description	Quantity
14	32mm M6 Bolt	1
15	35mm M6 Bolt	1
16	40mm M6 Bolt	1
17	42mm M6 Bolt	1
18	48mm M6 Bolt	1
19	M6 Washer (stainless)	2
20	12mm Spacer	2
21	5mm Spacer	2
22	1mm Spacer	4

Figure B

## ALTERNATOR RACK INSTALLATION INSTRUCTIONS

The Salsa Alternator Rack is designed specifically for mounting to Salsa frames equipped with Alternator dropouts.

The Alternator rack comes in two versions, one for standard 135mm spaced frames, and one for 170mm spaced frames (non-offset Fatbikes). Fitting of the wide Alternator rack to model year 2011 and 2012 Salsa Mukluk frames is also possible.

### WARNING

Installing this Salsa rack requires in-depth knowledge of bicycle mechanics and professional-grade tools. If you do not have the proper tools or knowledge to perform this installation, please take your bicycle to your local bicycle dealer. Failure to appropriately install this rack may lead to component failure, resulting in serious injury or death.

We recommend that you have this product installed, adjusted and maintained by a professional bicycle mechanic.

#### Tools:

- 4 & 5mm hex wrenches
- 10mm box-end wrench
- Torque wrench
- Hacksaw
- File
- Marker
- Level (optional)

Salsa Rack-Lock seat clamp  
(for frames without seatstay braze-ons)

To attach the lower legs you must first select the proper length bolts and spacer(s) configuration from the lower mount kit.

**Selection is dependent on frame material only, and is the same for both standard and wide versions of the Alternator Rack.**

1. To attach the lower legs you must first determine your bolt configuration:

#### Frames with Braze-On Mounts (2011–12 Mukluk Alloy)

The lower mount kit is not used when mounting to these frames. Instead, locate two of the four 16mm M5 bolts and washers (items 12 and 13). Skip ahead to Step 2.

#### Alternator-Equipped Frames

##### STEEL

- Drive-side: 32mm bolt, M6 washer, 12mm spacer
- Non-drive side: 40mm bolt, M6 washer, 12mm spacer

##### ALUMINUM

- Drive-side: 35mm bolt, M6 washer, 12 & 1mm spacers
- Non-drive side: 42mm bolt, M6 washer, 12 & 1mm spacers

##### TITANIUM (2013)

- Drive-side: 35mm bolt, M6 washer, 12 & 5mm spacers
- Non-drive side: 42mm bolt, M6 washer, 12 & 5mm spacers

#### MUKLUK TI 2012

- Drive-side: 40mm bolt, M6 washer, 12, 5 & two 1mm spacers
- Non-drive side: 48mm bolt, M6 washer, 12, 5 & two 1mm spacers

If you are unsure of the model year of your Mukluk Ti, inspect the dropout. If the dropout hoods are welded to the frame plate, it is a 2012 model and requires the longer mounting bolts. If the hoods and frame plate are 1-piece, it is a 2013 or newer model.

#### 2. Attach the lower legs

Depending on your frame, the lower legs may need to be spread or pinched up to 5mm. That is normal, however, never attempt to install a 170mm wide rack on a 135mm spaced frame or vice versa.

#### Frames with Braze-On Mounts

Using a 4mm hex wrench attach the rack legs to the braze-on mount, but don't tighten fully. Skip ahead to Step 3.

#### Alternator-Equipped Frames

- Using a 5mm hex wrench, remove the upper pivot bolt from both the right and left Alternator dropouts of the frame (Fig. 1). Set these bolts aside in a safe place to use again, should you choose to use the frame without the rack installed

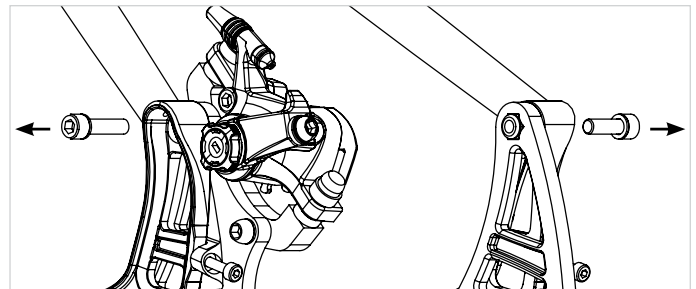


Figure 1

- Starting on the non-drive side, assemble the non-drive side bolt and stainless washer through the lower mounting tab of the rack. Add the spacer(s). Pass the exposed end of the bolt through the frame plate and swing plate, and thread it into the brake adapter bracket, but do not fully tighten (Fig. 2)

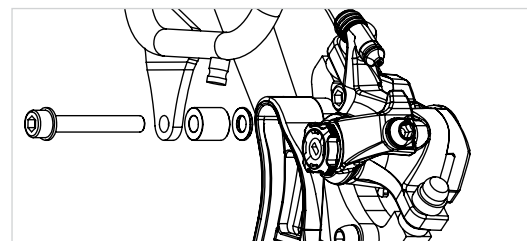


Figure 2

## ALTERNATOR RACK INSTALLATION INSTRUCTIONS

### 2. Attach the lower legs, continued

- Move to the drive-side and repeat the process, this time threading into the M6 lock nut (Fig. 3). Again, do not fully tighten

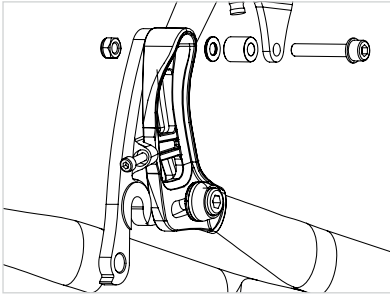
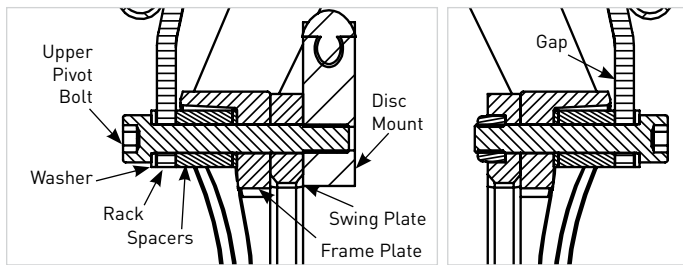


Figure 3

- The final assembly is shown below (Fig. 4). Check to make sure there is about a 1mm gap between the rack mounting tab and the dropout hood. (Fig. 4).



Left

Right

Figure 4

- ### 3. Loosen the rack's mounting struts using a 4mm hex wrench and 10mm box-end wrench (Figs. 5 & 6). Position the rack struts in line with the seatstay mounts, ensuring that the rack is level (parallel to the ground)

Note: Some frames equipped with Alternator dropouts do not have seatstay mounts (like El Mariachi). In these cases, a Salsa Rack-Lock must be used to create an attachment point for the mounting struts. Some XL and XS sized frames may require use of bent rack mounting struts (Item 11).



Figure 5



Figure 6

- ### 4. Mark how long the rack struts need to be to reach the seatstay mounts (Fig. 7)



Figure 7

- ### 5. Cut the rack struts to length with a hacksaw, file away any rough edges, and slide them back into the swivel mount. Reinstall the end caps (Fig 8)



Figure 8

- ### 6. Attach the rack struts to the seatstays using the remaining two 16mm M5 bolts and washers (Fig. 9)



Figure 9

## ALTERNATOR RACK INSTALLATION INSTRUCTIONS

7. Secure the struts in the swivel mounts, again using the 4mm hex and 10mm box-end wrenches (Figs. 10 & 11)



Figure 10



Figure 11

8. Tighten the upper pivot bolts of the Alternator dropouts to 8Nm and tighten the seatstay strut mounting bolts to 2-3Nm

### WARNING

- **Alternator racks are designed specifically to be mounted only to frames equipped with Alternator dropouts and 2011 & 2012 Mukluk frames.** Mounting to other frames may result in an over-expansion or over-compression of the rack lowers to fit the width of the frame, which may compromise the structural integrity of the rack, or possible contact between the rack and the wheel/tire due to variations in the rack-mounting boss locations
- Do not exceed the load capacity of 15kg (33 lb)
- Alternator racks are not designed for carrying anything other than panniers or rack-specific bags
- **Do not modify the Alternator rack.** Doing so will void the warranty (see right)
- Rear racks may change the steering and handling of your bike, especially when loaded. Be sure to test the handling out in a safe area before riding
- Make sure your load is evenly balanced and secure before every ride (i.e. no loose straps to get caught in the wheels)
- Position reflectors and lights so that they are not obstructed when the rack is loaded

### Warranty

Salsa Cycles warrants this new Salsa product against defects in materials and workmanship for three (3) years from the original date of retail purchase by the consumer. This limited warranty is expressly limited to the repair or replacement of the original product, at the option of Salsa Cycles, and is the sole remedy of the warranty. This limited warranty applies only to the original purchaser of the Salsa product and is not transferable. In no event shall Salsa Cycles be liable for any loss, inconvenience or damage, whether direct, incidental or consequential or otherwise resulting from breach of any express or implied warranty or condition, of merchantability, fitness for a particular purpose, or otherwise with respect to this product except as set forth herein.

**TO THE EXTENT NOT PROHIBITED BY LAW, THIS WARRANTY IS EXCLUSIVE AND THERE ARE NO OTHER EXPRESS OR IMPLIED WARRANTIES OR CONDITIONS OF MERCHANTABILITY AND FITNESS FOR A PARTICULAR PURPOSE.**

This warranty does not cover the following:

- Damage due to improper assembly or follow-up maintenance or lack of skill, competence or experience of the end user
- Products that have been modified, neglected, used in competition or for commercial purposes, misused or abused, involved in accidents or anything other than normal use
- Damage or deterioration to the surface finish, aesthetics or appearance of the product
- Normal wear and tear
- Labor required to remove and/or refit and re-adjust the product within the bicycle assembly
- Installation of components, parts or accessories not originally intended for or compatible with rack as sold

This warranty gives the consumer specific legal rights, and those rights and other rights may vary from state to state. For more warranty and safety information, please go to [www.salsacycles.com/safety](http://www.salsacycles.com/safety).

### Salsa Cycles

6400 West 105th Street, Bloomington, MN 55438  
Tel: 877-MOTO-ACE Fax: 952-983-6210  
[www.salsacycles.com](http://www.salsacycles.com)